

# THE EPIDEMIC OF INCARCERATION

## 01. Scope of the Healthcare Problem

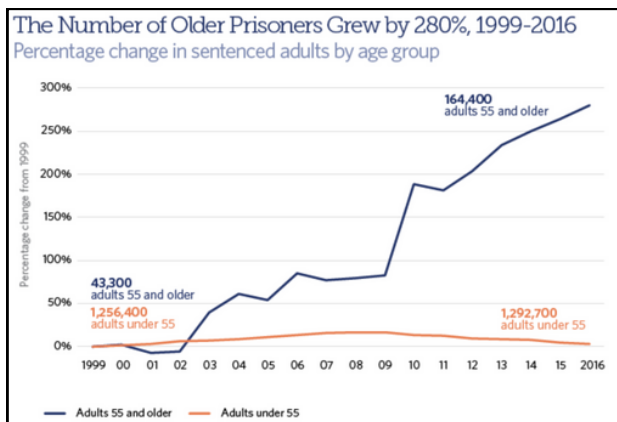
- People incarcerated face higher burdens of chronic medical conditions compared to non-incarcerated communities.<sup>1</sup>
- Incarceration is associated with mortality. For every 1 year someone is incarcerated over the age of 55, they lose 2 years of their life expectancy.<sup>2</sup>

History of:	Incarcerated %	General Population %
High blood pressure	30.2	18.1
Diabetes	9.0	6.5
Cardiovascular concerns	9.8	2.9
Asthma	14.9	10.2
Hepatitis	10.9	1.1

<sup>1</sup>Bureau of Justice Statistics. Medical Problems of State and Federal Prisoners and Jail Inmates, 2011-12. 2015. <https://bjs.ojp.gov/content/pub/pdf/mpsfj1112.pdf>

<sup>2</sup>Patterson EJ. The Dose-Response of Time Served in Prison on Mortality: New York State, 1989-2003. American Journal of Public Health. 2013;103(3):523-528. doi:<https://doi.org/10.2105/ajph.2012.301148>

## 02. Geriatric Individuals Incarcerated



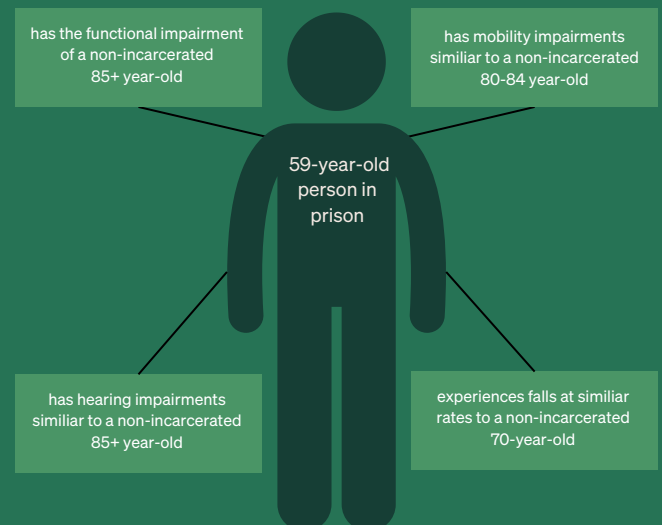
- The percent of incarcerated adults 55 and over has grown by 280% over the past 20 years.<sup>3</sup>
- It costs between \$60,000-\$70,000 to incarcerate an older individual, nearly double the \$27,000 it costs to incarcerate a younger individual.<sup>4</sup>

<sup>3</sup>McKillop M, Boucher A. Aging Prison Populations Drive Up Costs. Pewtrusts.org. Published February 20, 2018. <https://www.pewtrusts.org/en/research-and-analysis/articles/2018/02/20/aging-prison-populations-drive-up-costs>

<sup>4</sup>Anno J, Graham C, Lawrence J, Shansky R. Correctional Health Care: Addressing the Needs of Elderly, Chronically Ill, and Terminally Ill Inmates | National Institute of Corrections. nicic.gov. Published February 2004. <https://nicic.gov/resources/nic-library/all-library-items/correctional-health-care-addressing-needs-elderly>

## 03. Accelerated Aging

- Incarcerated individuals experience accelerated aging, or “an early onset of aging-related health conditions.” They have higher prevalences of all geriatric conditions, compared to non-incarcerated individuals.<sup>5</sup>



<sup>5</sup>Greene M, Ahalt C, Stijacic-Cenzer J, Metzger L, Williams B. Older adults in jail: high rates and early onset of geriatric conditions. Health & Justice. 2018;6(1). doi:<https://doi.org/10.1186/s40352-018-0062-9>